

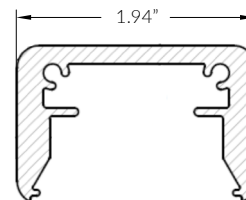
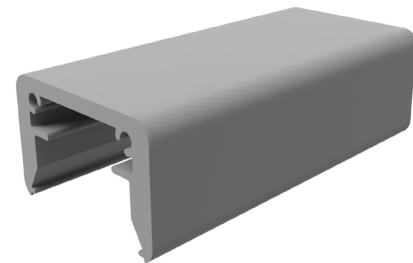
design·rail®

Graspable Top Rail (Series 250)

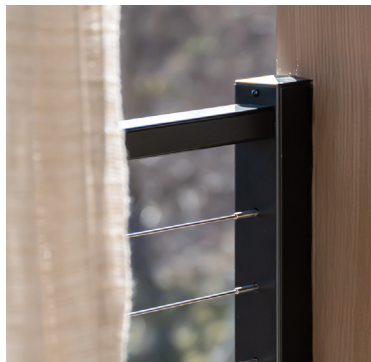
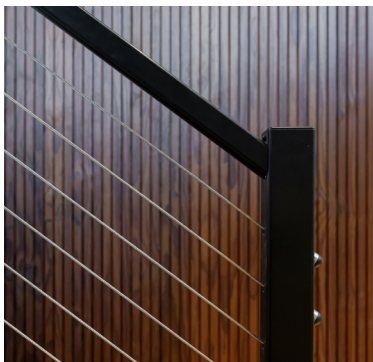
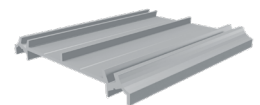
Series 250 is a 1.94" wide top rail for with an easy-to-grasp design for DesignRail® Modern or Custom. Code-compliant for residential stairs.

FEATURES & BENEFITS

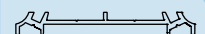
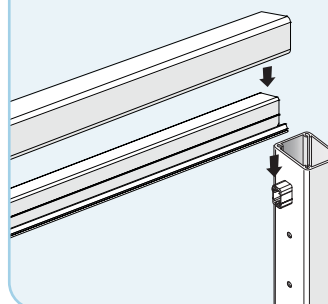
- Powder-coated aluminum, available in 15 ColorEasy™ colors.
- Installed between posts (using Rail Connecting Brackets) creating a newel post style.
- Optional Drink Rail Adapter for level railings to attach a wood or composite drink rail (NOT SUPPLIED BY FEENEY).
- Top rail can be ordered in 10-ft or 20-ft lengths.
- For use on level and stair railings.
- **Meets residential code requirements** for stair handrail sizing; requires a handrail when used on stairs in commercial settings.



DRINK RAIL ADAPTER
(OPTIONAL)



SERIES 250 INSTALLATION



250
TOP RAIL

DRINK RAIL ADAPTER
INSTALLATION

FEENEY IS A MEMBER OF:

