



# CABLE·RAIL® CUSTOM Quick-Connect® Inset

Feeney® Quick-Connect® Inset fittings are Fixed End fittings used when there is access to the outside post face. The Quick-Connect® Inset fits into a hole drilled in end post. Inset fittings can be used in level or stair applications. Must be paired with a Tension Adjustment fitting; use with Feeney Bulk Cable, sold separately.

## FEATURES & BENEFITS

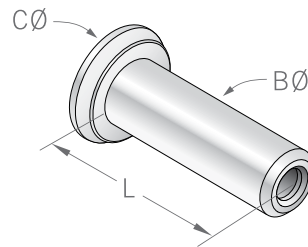
- For use with wood or metal frames, level or stair railings
- Made of Type 316 marine-grade stainless steel
- Inserts into post; the lip rests against the outside post face
- Use beveled washers for angled stair terminations and flat washers for added bearing surface on wood posts
- Must be paired with a Threaded Terminal or another Tension Adjustment fitting for one run of cable



FIXED END



QUICK-CONNECT® INSET



## QUICK-CONNECT® INSET

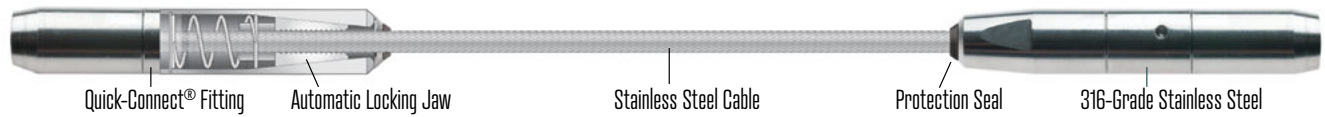
| Part# | CableØ | CØ   | BØ     | L      | DrillØ** |
|-------|--------|------|--------|--------|----------|
| 3146  | 1/8"   | 5/8" | 3/8"   | 1-1/8" | 3/8"     |
| 3147  | 3/16"  | 3/4" | 17/32" | 1-5/8" | 9/16"    |
| 3148  | 1/4"   | 3/4" | 17/32" | 1-5/8" | 9/16"    |

\*\* May counterbore with slightly larger diameter drill to embed Quick-Connect® body into post

FEENEY IS A MEMBER OF:



## QUICK-CONNECT® TECHNOLOGY



Feeney Quick-Connect® fittings offer the flexibility of assembling cables in the field with simplicity and speed. Patented automatic-locking-jaws grip the cable with no need for specialized tools. Simply trim your cable to length, push the end into the Quick-Connect® fitting, and the spring-loaded jaws automatically engage. You're ready to go!

Made from 316-grade stainless steel for weather-tough durability, low maintenance, and lasting beauty. Fittings also come with a silicone protection seal pre-inserted into the end, providing added protection against dirt and debris entering the body of the fitting. If necessary, our Quick-Connect® Release Tool can be used to disengage and remove or readjust the fitting.

## CABLE ASSEMBLIES

There are two types of fittings: Fixed End fittings and Tension Adjustment fittings.

**Each cable assembly must include at least one Tension Adjustment fitting.**



## TENSION ADJUSTMENT FITTINGS

- Include Tensioner fittings, Turnbuckles, Threaded Terminals, and Adjusters
- Tension is adjusted by spinning the tubular body on Tensioners and Turnbuckles, tightening the bolt on Threaded Terminals, or rotating the bolt on the Adjusters
- Tension Adjustment fittings can be paired with either a Fixed End or another Tension Adjustment fitting.

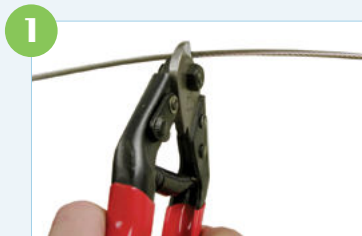
## FIXED END FITTINGS

- Non-adjustable end termination fittings
- No tensioning capabilities
- Must be paired with a Tension Adjustment fitting

### NOTE:

CableRail is made of marine grade stainless steel and will last for years with regular maintenance. Learn more: [feeneyinc.com/Warranty-and-Care](https://feeneyinc.com/Warranty-and-Care).

## EASY INSTALLATION



TRIM CABLE TO LENGTH



INSERT CABLE INTO FITTING



JAWS LOCK AUTOMATICALLY

## SPECIALLY ENGINEERED TOOLS FOR CABLERAIL



### Quick-Connect® Release Tool

For releasing the Quick-Connect® jaws to remove or adjust fitting.



### Wrench Wheel

An easy-to-use tool for tensioning Quick-Connect® Tensioner fittings.



### Cable Lacing Needle

For quickly lacing cable ends through posts without snagging.



### Cable Tension Gauge

Easy-to-use tool for checking cable tension.



### Stainless Steel Cleaner Kit

Clean and maintain all stainless steel surfaces, fittings, and cables.