

# Resin Panel Infill Creates a Stylish, Eco-friendly Connection to Nature

Brought to you by Feeney, Inc. — Sponsored Content



For Architects and Builders of Distinctive Homes



DESIGNRAIL® WITH GINKO THATCH RESIN INFILL

Finding new ways to incorporate key elements of the natural world into the built environment has become a growing focus for many architects and designers, resulting in clever new approaches to residential design.

Increasingly, design-build professionals are looking to bring elements from nature into the home through the use of biophilic principles. In its simplest form, biophilic design involves the incorporation of organic or nature-inspired materials and textures within architectural spaces, allowing inhabitants to feel connected to the natural world—even when indoors. A number of studies show how the application of biophilic design within built spaces can lower stress levels and reduce heart rates and blood pressure while improving creativity, productivity and overall well-being.

From emphasizing water or fire elements to adding greenery and natural light to including accents crafted of stone or wood, showcasing

natural elements in residential spaces not only makes a visual statement but affirms our intrinsic need to stay rooted within nature.

Developments in materials that utilize biophilic design have resulted in new ways to incorporate natural elements within interior spaces. One such material is resin panel railing infill from Feeney. Embedded with organic materials such as grasses, leaves and branches, the innovative infill makes it possible to create statement-making stairways and landings that not only tie-in harmoniously with other interior elements but also with outdoor areas such as decks and patios to achieve a seamless transition between these environments.

Architects and designers are able to choose from among nine distinctive options—ranging from bamboo to rice grass—to create one-of-kind railing panels that express their unique design vision. The infill is installed in DesignRail® aluminum railing frames, which

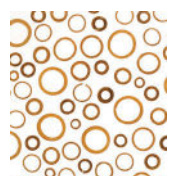
are available in Feeney's high performance and long lasting ColorEasy™ powder coat program, providing almost endless design flexibility.

Available for 36- and 42-inch railing heights, the resin infills can be mixed-and-matched with a variety of other Feeney infill options, including cable railing, glass, vertical cable, stainless steel mesh, laser-cut aluminum panels and aluminum pickets—and are compatible with all DesignRail® top rail styles.

Constructed using a specially-formulated co-polyester resin developed by 3form that merges performance with environmental responsibility, the resin panels incorporate 40 percent pre-consumer recycled content and are GREENGUARD® Indoor Air Quality Certified. In addition, they have been independently tested and meet the criteria for approved interior finishes and light transmitting resin materials per the 2018 International Building Code®.

The lightweight resin is half the density of glass, simplifying installation while reducing structural support requirements. The infill panels fit easily into the pre-engineered DesignRail® frame and are fully surrounded on all four sides with a low-profile aluminum channel, providing an aesthetically clean appearance with minimal transition from panel to frame.

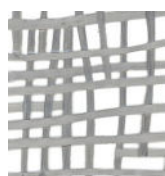
Effective biophilic design removes the barriers between built and natural environments. Incorporating natural features proven to promote happiness and well-being, such as railing infill embedded with organic materials, brings new life—and enduring style—to residential spaces and those who inhabit them.



Bamboo Rings  
Natural



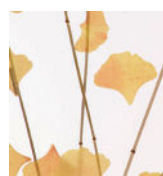
Bear Grass Lite



Connection  
Square Gray



Fossil Leaf  
Spade Random



Ginkgo Thatch



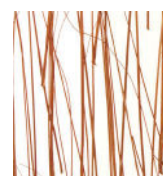
Kathali Grays



Rice Grass



Thatch  
50 Percent



Ting Ting

To learn more visit [www.feeneyinc.com/Designer](http://www.feeneyinc.com/Designer).