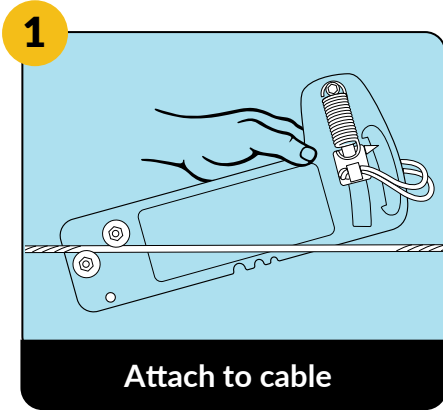


Feeney® Tension Gauge

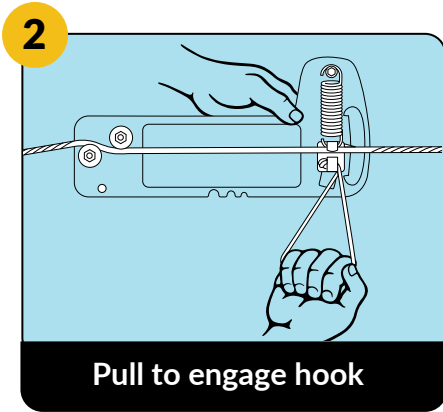
for use with CableRail kits, fittings and cable

Proper cable tensioning is an important part of the installation and long term performance of railings using CableRail stainless steel infill. This easy to use Tension Gauge (SKU: 6004) is a quick and simple way to measure the tension of the cables.



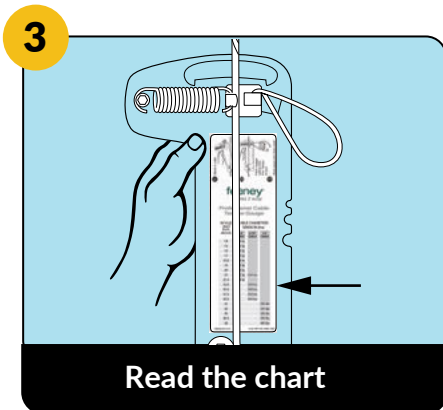
STEP 1 - Attach

Attach the Tension Gauge by placing the cable between the two pulley wheels as shown.



STEP 2 - Pull

Pull to engage spring hook and attach to the cable, then release the lanyard.



STEP 3 - Read

Read the chart at right or on label to find the tension.

SCALE (read from above)	CABLE DIAMETER/ TENSION (lbs)		
	1/8" CABLE	3/16" CABLE	1/4" CABLE
14	200 lbs		
15	225 lbs		
16	250 lbs		
17	275 lbs		
18.5	300 lbs		
19	325 lbs		
20	350 lbs		
21	375 lbs	200 lbs	
21.5	400 lbs		
23.5		250 lbs	
25.5		300 lbs	
27.5		350 lbs	
28.5		400 lbs	
31			200 lbs
33			250 lbs
35			300 lbs
36.5			350 lbs
38			400 lbs

U.S. PAT NO 5,461.929