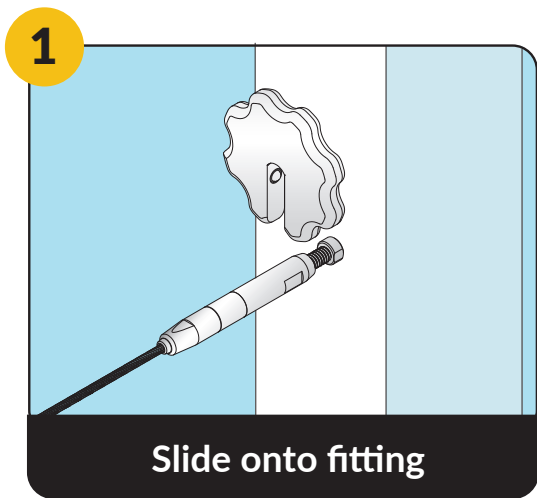


# Feeney® Quick-Connect® Wrench Wheel

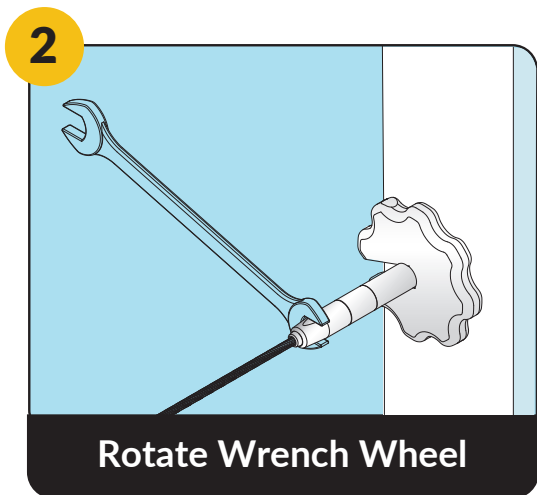
for use with Quick-Connect® Tensioner fittings

The Wrench Wheel (SKU: 6006) securely grips onto the wrench flats of the fitting using a specially designed spring ball retainer. Made from lightweight, durable 6061 aluminum alloy for long lasting performance.



## STEP 1 - Slide onto fitting

Slide the Wrench Wheel onto the wrench flats of the Quick-Connect® Tensioner fitting,



## STEP 2 - Rotate Wrench Wheel

Rotate Wrench Wheel by hand to adjust the cable tension, while holding the opposite end of the Tensioner fitting in a fixed position with an open-end wrench or another Wrench Wheel