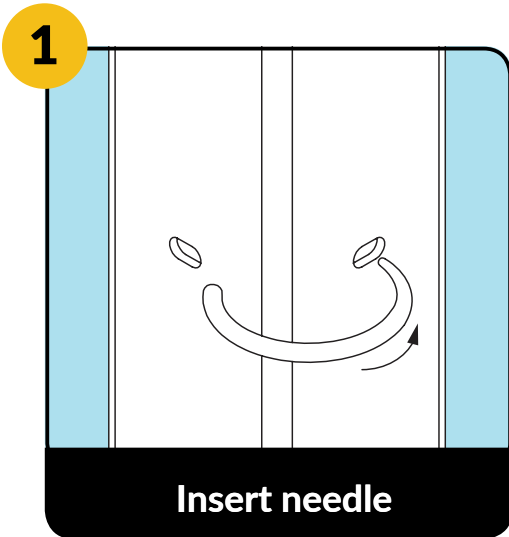


# Feeney® Curved Cable Lacing Needle

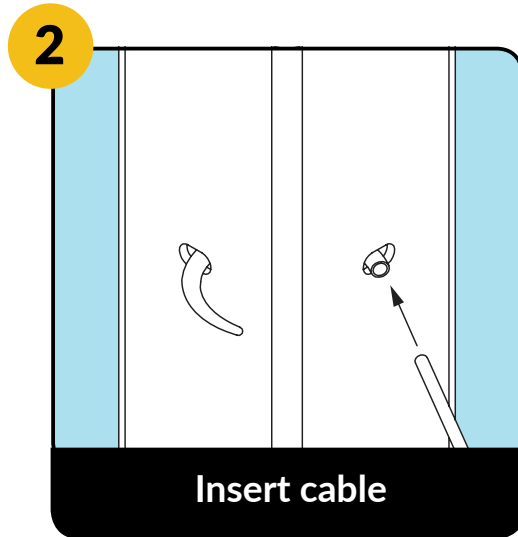
for use with DesignRail® Single Corner Posts

The Curved Lacing Needle (SKU: 3221-CURVE) is a reusable tool for quickly lacing the loose cable ends through DesignRail® Single Corner Posts.



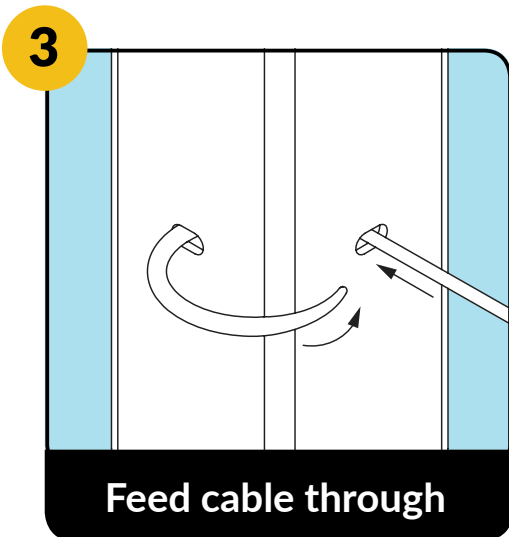
### STEP 1 - Insert the needle into post

Insert the curved lacing needle into the post hole, pointed end first. Make sure that both ends are protruding slightly from the holes for step 2.



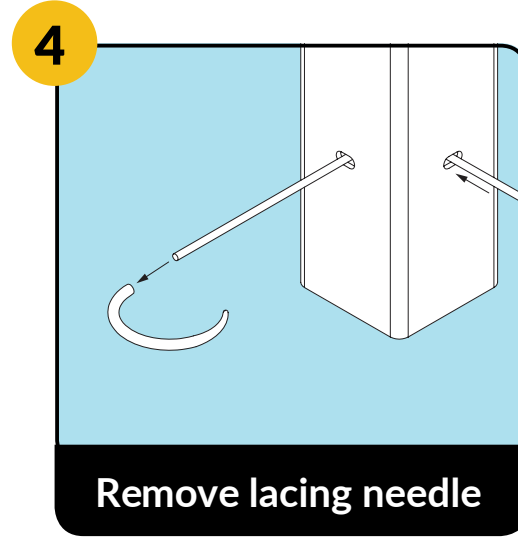
### STEP 2 - Insert cable into the needle

Insert the free end of the cable into the curved lacing needle while holding the pointed end in place.



### STEP 3 - Feed the cable through

Push the cable further into the post hole - the curved lacing needle will guide the cable through the other opening.



### STEP 4 - Remove the lacing needle

Remove the curved lacing needle from the cable and continue lacing the cable. You may use a regular Lacing Needle for the other post holes.