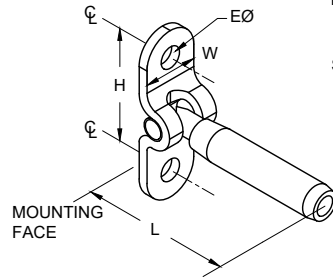


ITEM: SURFACE MOUNT  
MATERIAL: TYPE 316 STAINLESS STEEL.  
FITTING TYPE: NON-ADJUSTABLE CABLE END FITTING  
SWAGE TYPE: MACHINE HEX SWAGE AT FACTORY (1/8" & 3/16" SIZES  
ALSO AVAILABLE IN CABLECRIMP HAND SWAGE STYLE FOR FIELD  
FABRICATION)  
POST TYPE: WOOD. METAL POSSIBLE BUT NOT RECOMMENDED.  
(POSTS NOT INCLUDED).  
FASTENING TO POST: ATTACH TO FACE OF END/TERMINATION POST OR WALL  
USING TWO SCREWS OR BOLTS.  
FASTENING AT ANGLES: MOUNTING FLANGE PIVOTS UP TO 130 DEGREES.  
CABLE TENSIONING: NON-ADJUSTABLE FIXED END.  
HARDWARE PAIRINGS: USUALLY PAIRED WITH SURFACE MOUNT TURNBUCKLE. MUST  
ONLY BE PAIRED WITH A TENSION ADJUSTMENT FITTING  
(NOT ANOTHER FIXED END).

SUPPLIER:  
FEENEY, INC.  
2603 UNION STREET, OAKLAND, CA 94607  
PH: 1-800/888-2418 FAX:  
1-510/893-9484  
E-MAIL: [sales@feeneywire.com](mailto:sales@feeneywire.com)  
WEB: [www.cablerail.com](http://www.cablerail.com)



SURFACE MOUNT, STAINLESS STEEL

PART#	MODEL#	SWAGE TYPE	CABLE SIZE	HOLE DIA. (EØ)	HOLE SPAN (H) †	FLANGE WIDTH (W)	LENGTH (L)	ATTACHMENT POST DRILL HOLE Ø
3281	125-FSM-T	MACHINE	1/8"	1/4"	1-3/8"	5/8"	2-1/8"	LAG OR TAP
3284	187-FSM-T	MACHINE	3/16"	1/4"	1-3/8"	5/8"	2-1/4"	LAG OR TAP
3337	250-FSM-T	MACHINE	1/4"	5/16"	1-1/2"	3/4"	3-1/4"	LAG OR TAP
*3333	CC125-FSM-T	CABLECRIMP	1/8"	1/4"	1-3/8"	5/8"	3"	LAG OR TAP
3334	CC187-FSM-T	CABLECRIMP	3/16"	1/4"	1-3/8"	5/8"	3"	LAG OR TAP

\* 3333 IS SAME AS A #3334 BUT INCLUDES A CONVERSION INSERT SLEEVE FOR CRIMPING ONTO 1/8" CABLE

† SINCE FLANGES ARE FORMED PIECES, ALLOW A TOLERANCE OF ±1/16" ON FLANGE HOLE SPAN DIMENSION (H).

CableRail Reference Drawing:  
**SURFACE MOUNT**

THIS DRAWING IS THE PROPERTY OF FEENEY INC. ANY REPRODUCTION OF THIS DOCUMENT WITHOUT THE EXPRESSED WRITTEN CONSENT OF FEENEY INC. IS STRICTLY PROHIBITED.

DATE: 05/15/13  
PAGE: 1 of 1  
REV: A (12/15/17) MRJ  
BY: DSY  
CHK: BWA

**feeney**   
2603 Union St., Oakland, CA 94607  
P: 800-888-2418 F: 510-893-9484  
[www.feeneyinc.com](http://www.feeneyinc.com)