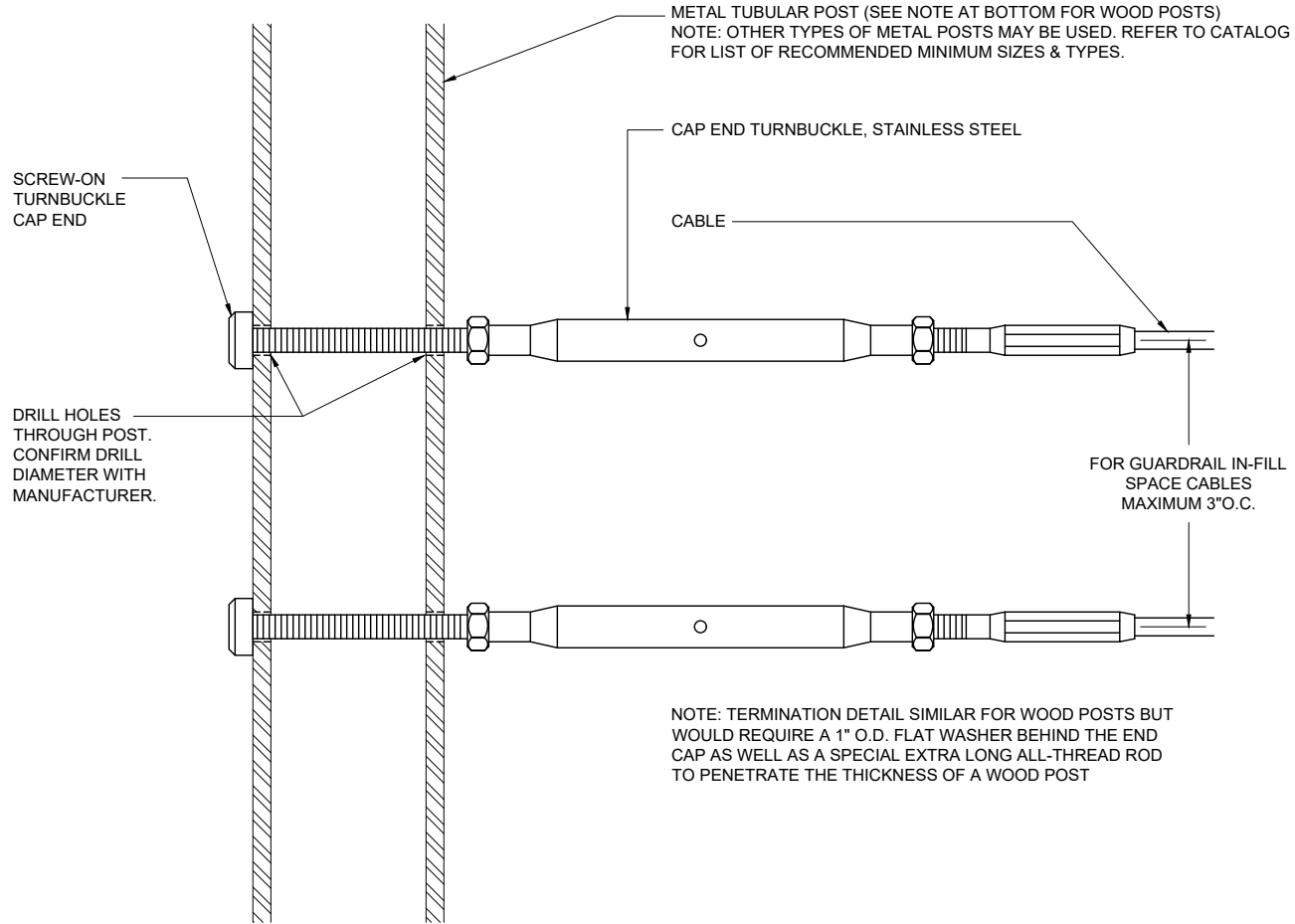


CAP END TURNBUCKLE - HORIZONTAL TERMINATION ON METAL POST
 (DETAILS TYPICAL FOR 1/8", 3/16" & 1/4" CABLE)



NOTE: TERMINATION DETAIL SIMILAR FOR WOOD POSTS BUT WOULD REQUIRE A 1" O.D. FLAT WASHER BEHIND THE END CAP AS WELL AS A SPECIAL EXTRA LONG ALL-THREAD ROD TO PENETRATE THE THICKNESS OF A WOOD POST

CableRail Reference Drawing:
CAP END TURNBUCKLE - LEVEL TERMINATION

THIS DRAWING IS THE PROPERTY OF FEENEY INC. ANY REPRODUCTION OF THIS DOCUMENT WITHOUT THE EXPRESSED WRITTEN CONSENT OF FEENEY INC. IS STRICTLY PROHIBITED.

DATE:	05/15/13
PAGE:	1 of 1
REV:	A (12/13/17) MRJ
BY:	DSY
CHK:	BWA



2603 Union St., Oakland, CA 94607
 P: 800-888-2418 F: 510-893-9484
 www.feeneyinc.com